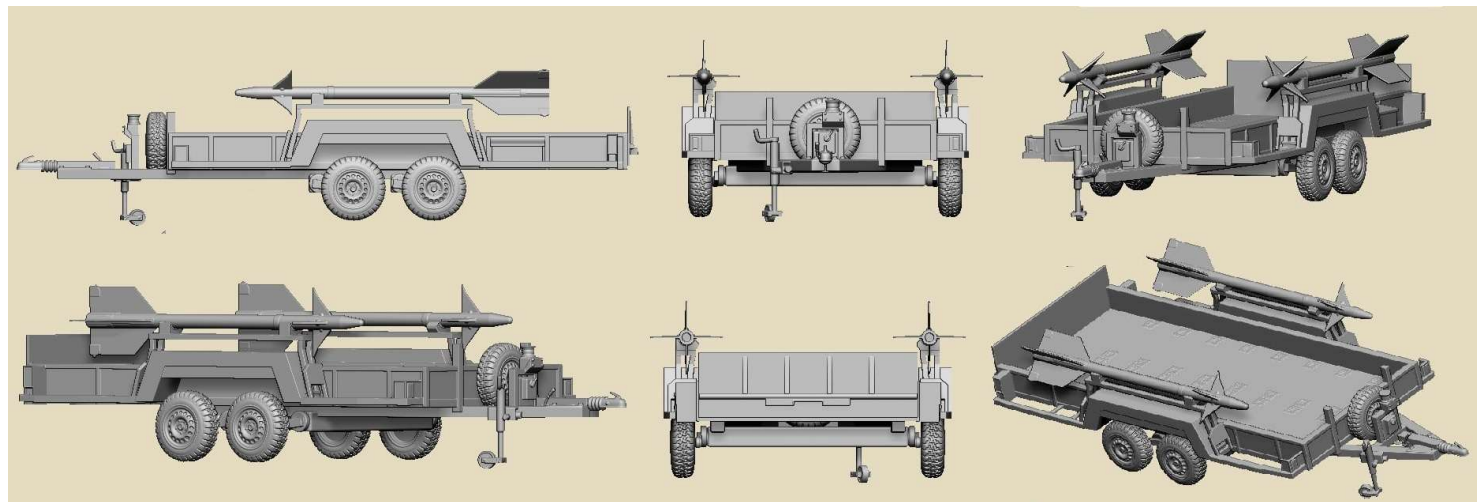


History

With the introduction of the Saab J37 Viggen, in all its versions, a new maintenance and arming process was introduced that was suitable for normal airbases as well as the Bas 60 forward bases along highways in the woods. For arming of all versions, the Amsläpkärra 2071 MT, or ammunition trailer, carried 2 palletised carts/förrådsvagn of weapons and was towed by a **Jeep Klargöningsbil (GEC72010b)**. In this case the palletised carts/Förrådsvagn for rocket pods / attackraketskapsel, or gun pods / automatkanonkapsel for the AJ37 or 2 förrådsvagn/pallets for the Skyflash Missile for the JA37 were carried. The förrådsvagn had a removable top frame for the purpose of stacking weapons in warehouses and could be shifted with a forklift. On the trailer, they were often moved without the tops of the cage. The AM-LADA F1250 cart was used to load 30 mm Ammunition for the JA37 and unload the spent cartridges. The Amsläpkärra and the förrådsvagn continued to be used with the Grippen.

Model Construction



Carefully remove 3D print supports. Prime and paint the equipment in Swedish Olive drab (Tamiya AS-14). Paint the tires dark grey and attach them and the Sidewinders to the Amsläpkärra. Stencils were in yellow. The operational gun pods and Rocket pods were painted the same medium grey as the under surface of the Viggen. Training versions of the pods and missiles were bright green. The operational missiles were mostly white or light grey. To liven up the model, we recommend the **GEC72040 Swedish 1970-1980s Flygvapnet Ground Support Crew and Officer of Figures**. We recommend Wolf 3D Resins for weapons, pylons and pods on their own. <https://www.wolf3dresinparts.at/shop/saab-37-viggen/> For reference photos access <https://www.geckoheavyindustriesmodels.de/gec-72045-j37-ground-support-armament-set/> using password **found on printed kit instructions**.

General Instructions

We try to make our parts as easy to fit as possible but these are kits for relatively experienced modelers. If parts are warped, dip in very hot water and gently bend back to right shape. The usual plastic cement does not work on resins. Cyano acrylate glue or epoxy do the job. Resin Parts are preferably sanded wet, to avoid inhaling the dust. The use of Cyano acrylate and epoxies is also to be done under well ventilated conditions. Read the instructions of your adhesive products. **NOT RECOMMENDED TO CHILDREN UNDER THE AGE OF 14.**