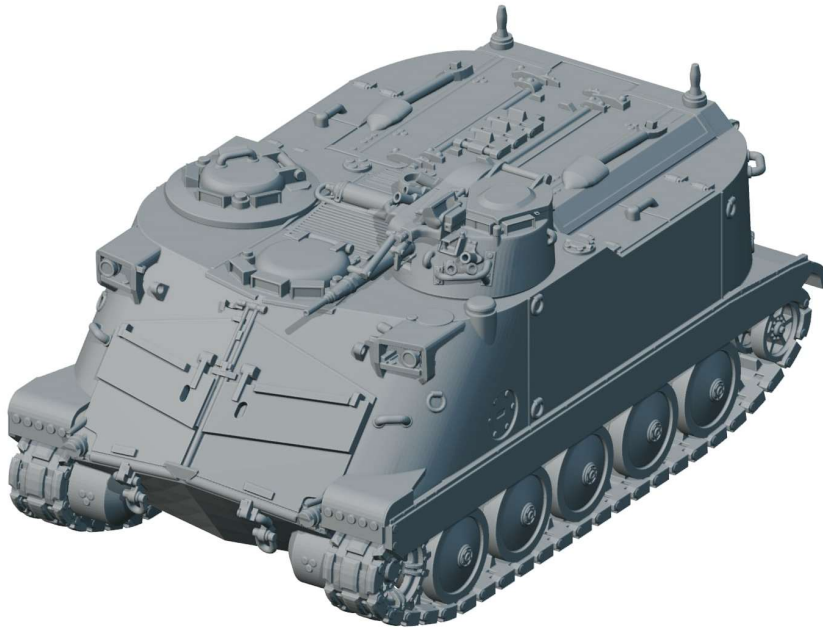


# GECKO HEAVY INDUSTRIES PANSARBANDVAGN 302A



**GEC72047**  
**SCALE: 1/72**

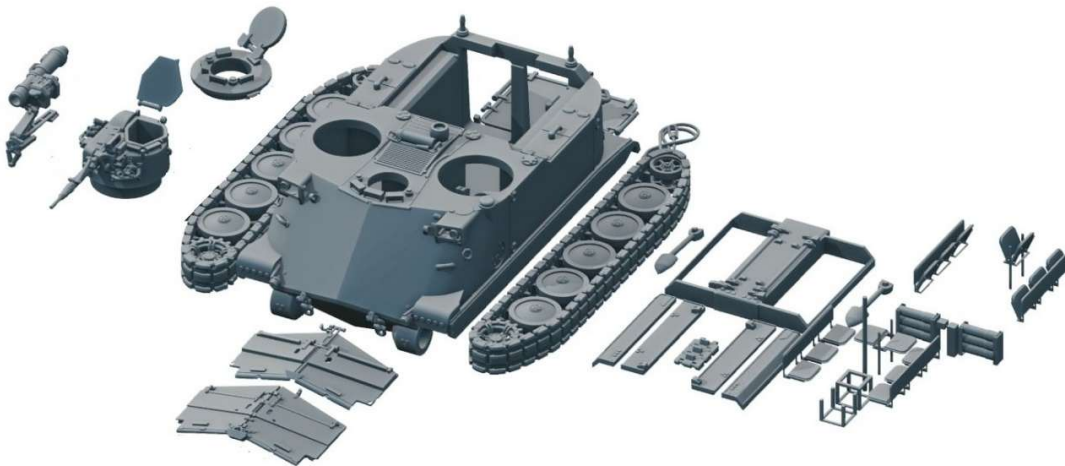


## History

Hägglund & Söner was commissioned in 1961 to design and produce a modern IFV-design to replace the PBV 301. 644 PBV 302s were manufactured from 1966 to 1971 and were used by the Swedish Army until 2014 when it was completely replaced by the strf 9040. In 2024 Sweden donated its entire remaining stock of around 200 Pbv 302s to Ukraine. Armament in the one man turret is a modified 20 mm Hispano HS-804 cannon taken from scrapped Saab 29s. It carried 3 crew and 8 mechanised infantry that could fight from inside the vehicle. It has exceptionally good off-road mobility, and the low ground pressure enables it to operate over summer bog and winter snow. It is powered by a Volvo 10-liter, 270 hp diesel engine. The vehicle is fully amphibious with little preparation by the crew. Maximum road speed is 65 km/h. The range on

roads is about 300 km. The Pbv 302 shares common components with the lkv 91, Bärningsbandvagn BGBV 82 and Brobandvagn Brobv 941.

## Model Construction



Very carefully cut out the kit parts from the 3D supports and sand off any residue. You have a choice of 2 splash plates and can assemble the cargo compartment with seats down or folded. All hatches can be opened. Prime and paint all major modules. You can paint the vehicle in the early olive green scheme or the later splinter camouflage. Markings were usually only the licence plates with yellow numbers on black background, though there were sometimes tactical or test markings. To liven up the model, we recommend the **GEC72035 1960-1980s m/59 Uniformed sitting Mechanized Infantry figures** and **GEC72034 1970-1980s m/69P tank crew figures**. On <https://www.geckoheavyindustriesmodels.de/gec-72047-pbv-302-armoured-personnel-carrier/> Use password found in kit instructions to access reference material of period restored and museum photo, of Swedish Army PBV 302As to help you assemble and paint your kit. Speira Miniatures have m/59 uniformed figures suitable for firing out of the top hatches or as tank riders <https://speira.net/product-category/modern-era/modern-sweden/page/2/>

## General Instructions

We try to make our parts as easy to fit as possible but these are kits for relatively experienced modelers. First, we urge you to clean up the parts with soap and water, to remove possible remains of release agents. If parts are warped, dip in very hot water and gently bend back to right shape. The usual plastic cement does not work on resins and metals. Cyano acrylate glue or epoxy do the job. Resin Parts are preferably sanded wet, to avoid inhaling the dust. The use of Cyano acrylate and epoxies is also to be done under well ventilated conditions. Read the instructions of your adhesive products. **NOT RECOMMENDED TO CHILDREN UNDER THE AGE OF 14.**