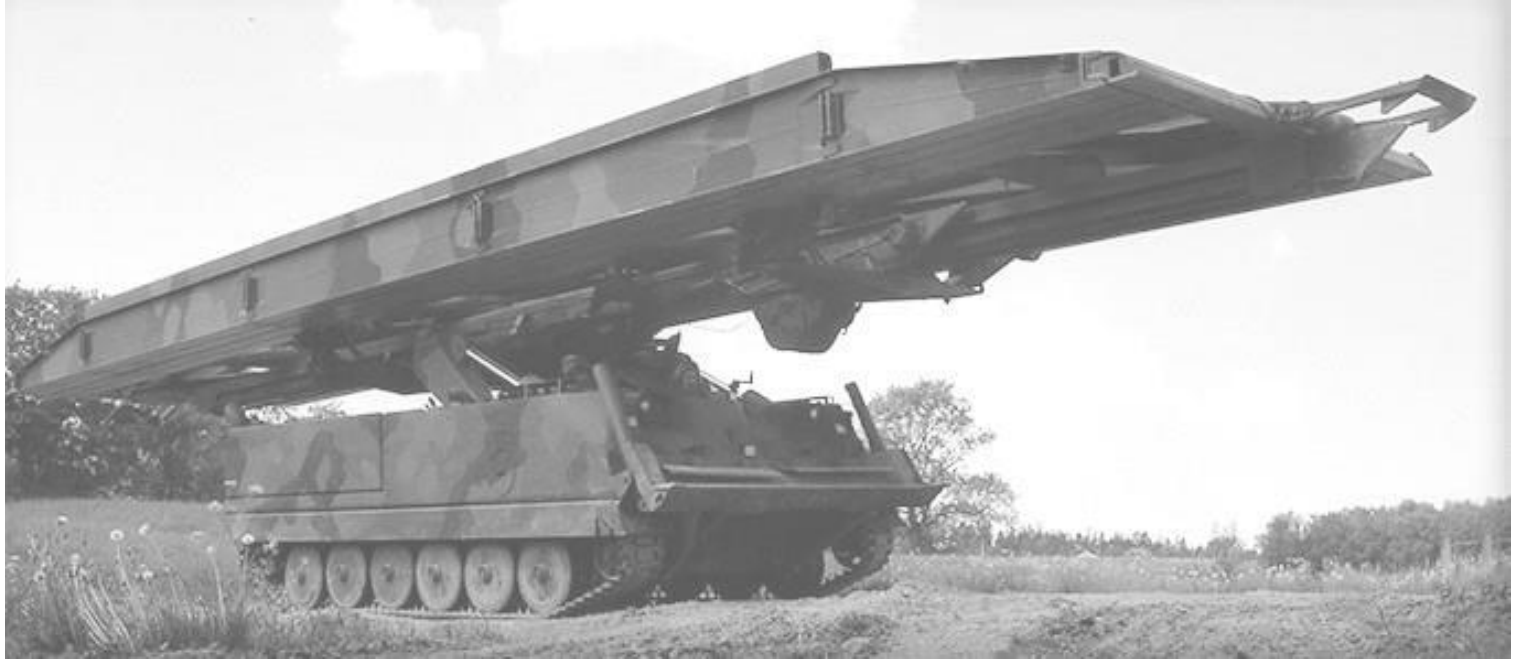


GECKO HEAVY INDUSTRIES BROBANDVAGN BROBV 941



GEC72009
SCALE: 1/72



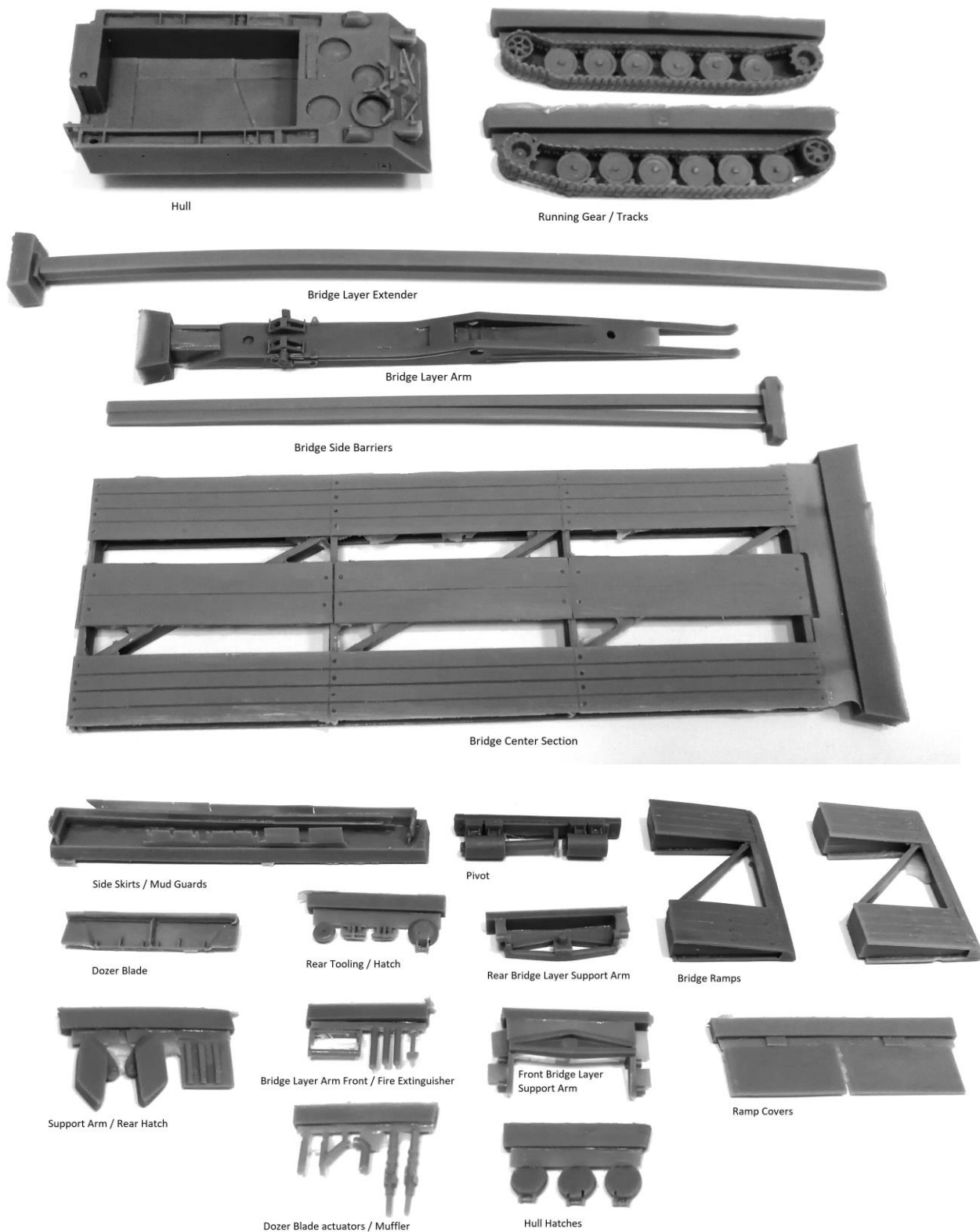
History

In Parallel to the Bgvb 82, Hägglund and Söner received a contract to develop a bridge layer. As part of an early platform or module strategy, the Brobv 941 used common components with the Pbv 302 armoured personnel carrier, lkv 91 light tank and the very similar Bgvb 82 armoured recovery vehicle. The first of 17 Brobvn 941 entered production in the early 1970 and entered service in 1973. It features the dozer blade of the BGVB in front and carries a hydraulically actuated 7 ton bridge capable of bridging vehicles of up to 50 tons. The Brobvn 941 is powered by a 6 cylinder Volvo Penta THD 100C Diesel engine with 310 hp, which permitted a maximum speed of 56 kmh. The Brobvn 941 was first complimented with former Easter German T-55 Based Brobvn 971 bridgelayers and is now likely to be replaced with the Leopard II based Leguan. A number are already preserved in museums.

Instructions Brobv 941

Carefully remove parts from the casting blocks. Clean all components and sand off any remaining injection gates or flash. Prime all components with Gunze Sangyo Mr. Surfacer, Hallfords Grey or similar automobile primer spray paint in a well-ventilated room. The modeler may assemble the top hatches open or closed as per cover photo and position the dozer blade as desired. Carefully trim and fit left and right running gear to hull leaving adequate clearance for side skirts, if needed. The idler is at the front while the sprocket is at the rear. Attach dozer blade to hull using hydraulic arms on front hull corners as well as on the bottom of the hull with the two struts. Attach rear hatch open or closed and cement tooling in place. Drill out smaller pivot receptacle. Carefully place bridge layer arm between pivot and support arms and fit to hull. The smaller bridge layer side support arm goes to the rear of the arm at a marked position and the larger one goes at the marked position in front. Place straightened bridge layer extender in rail on arm and position as desired. You may need to use thin wire rods for strength to join bridge center section and ramps. Place ramp covers on ramps and side barriers on center section.





Useful Web Sites:

Please refer to the internet using a search engine for help with paint schemes.

http://www.ointres.se/brobv_941.htm

http://www.primeportal.net/ce/roger_johansson/brobv_941/

There is no guaranty these web site are still up and running by the time you read this.

General instructions

We try to make our details as easy to fit as possible. However, we expect our customers to have some modelling experience. We urge you to clean up the parts with soap and water, to remove possible remains of release agents. Usual plastic cement does not work on resins and metals. Cyano acrylate glue or epoxy does the job. If longer parts are bent, soak in hot water and gently bend until they are straight. Resin Parts are preferably sanded wet, to avoid inhaling the dust. The use of Cyano acrylate and epoxies is also to be done under well ventilated conditions. Read the instructions of your adhesive products.

NOT RECOMMENDED TO CHILDREN UNDER THE AGE OF 14.

