

GECKO HEAVY INDUSTRIES

J37 VIGGEN GROUND SUPPORT RECON SET



GEC72046
SCALE: 1/72

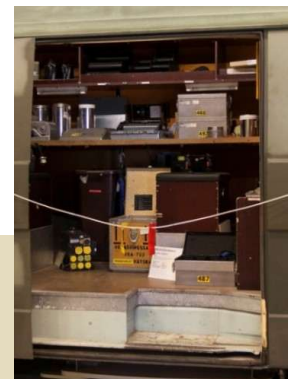
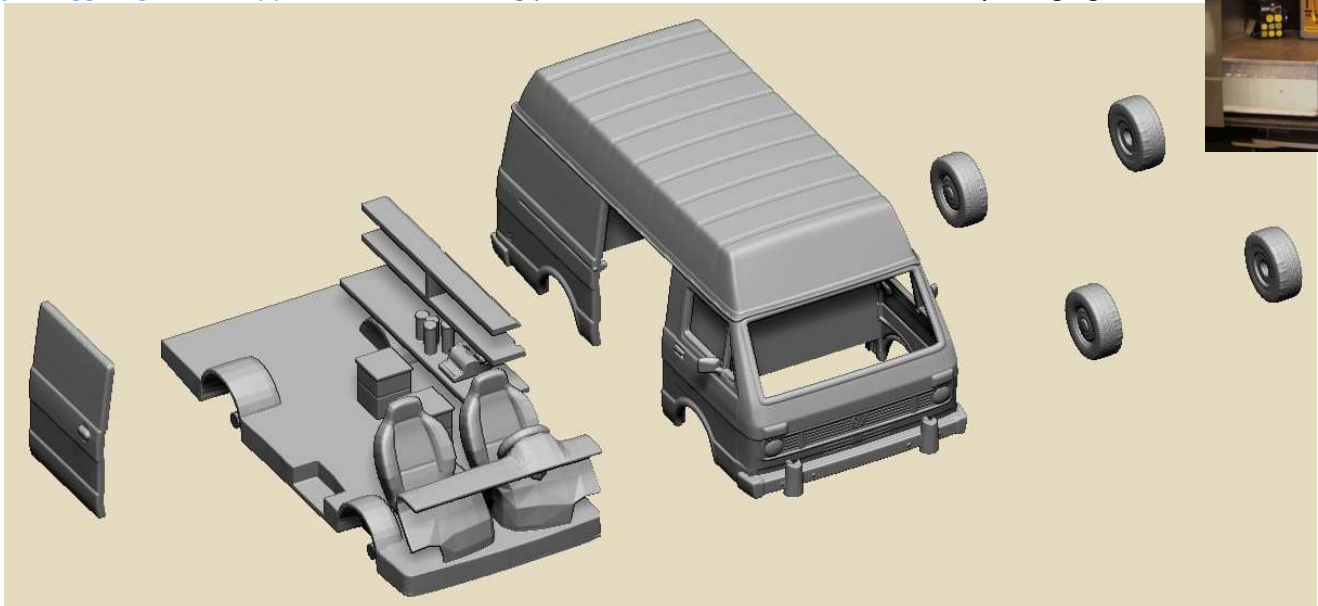


History

With the introduction of the Saab J37 Viggen, in all its versions, a new maintenance and arming process was introduced that was suitable for normal airbases as well as the Bas 60 forward bases along highways in the woods. For Servicing the Saab SF37 Viggen reconnaissance version, the VW LT31 Mörkrumsbil with a high roof was acquired to serve as a mobile dark room. Film from the mission could be developed on the way back to the base. The Volkswagen LT (Lasten-Transporter) van was launched in 1975 and produced in facelifted versions until 1996 as a larger complement to the popular smaller VW Bus. The LT came in three gross vehicle weights, from 2.8 to 3.5 tons (LT 28, LT 31, LT 35), with two wheelbases, two roof options, and with bodywork options as a panel van, a compact, a platform vehicle, and a chassis cab combination. The design featured a lot of interior room thanks to the forward control design. **The rear windows were blanked off.** After the SF37 Viggen was retired, the surviving vehicles were relegated to a couple of museums or sold as surplus.

Model Construction

Very carefully remove 3D print supports. Sand off some internal framing in the bottom middle section of the body to make room for chassis. Prime and then paint the bus in Swedish Olive drab (Tamiya AS-14). Paint the tires dark grey. Stencils were in yellow. The interior of the Mörkrumsbil was panelled in reddish dark wood and had lighter coloured wooden shelves for equipment. The floor had lighter coloured wood laminate. The jars on the shelf were silver. Front seats were dark grey. After painting, cut out provided clear plastic packaging material and apply to windshield and side windows area with white PVA glue. For reference photos access <https://www.geckoheavyindustriesmodels.de/gec-72046-j37-viggen-ground-support-recon-set/> using password **found on instructions in kit packaging**.



Above
Interior
Photo from
Flygvapnet
Museum

To liven up

the vehicle, we recommend **GEC72040 Swedish 1970-1980s Flygvapnet Ground Support Crew and Officer set** or the **GEC72039 Swedish 1960-1980s m/59 Uniformed 1960-1980s Drivers and Passengers set**.

General Instructions

We try to make our parts as easy to fit as possible but these are kits for relatively experienced modelers. If parts are warped, dip in very hot water and gently bend back to right shape. The usual plastic cement does not work on resins. Cyano acrylate glue or epoxy do the job. Resin Parts are preferably sanded wet, to avoid inhaling the dust. The use of Cyano acrylate and epoxies is also to be done under well ventilated conditions. Read the instructions of your adhesive products. **NOT RECOMMENDED TO CHILDREN UNDER THE AGE OF 14.**