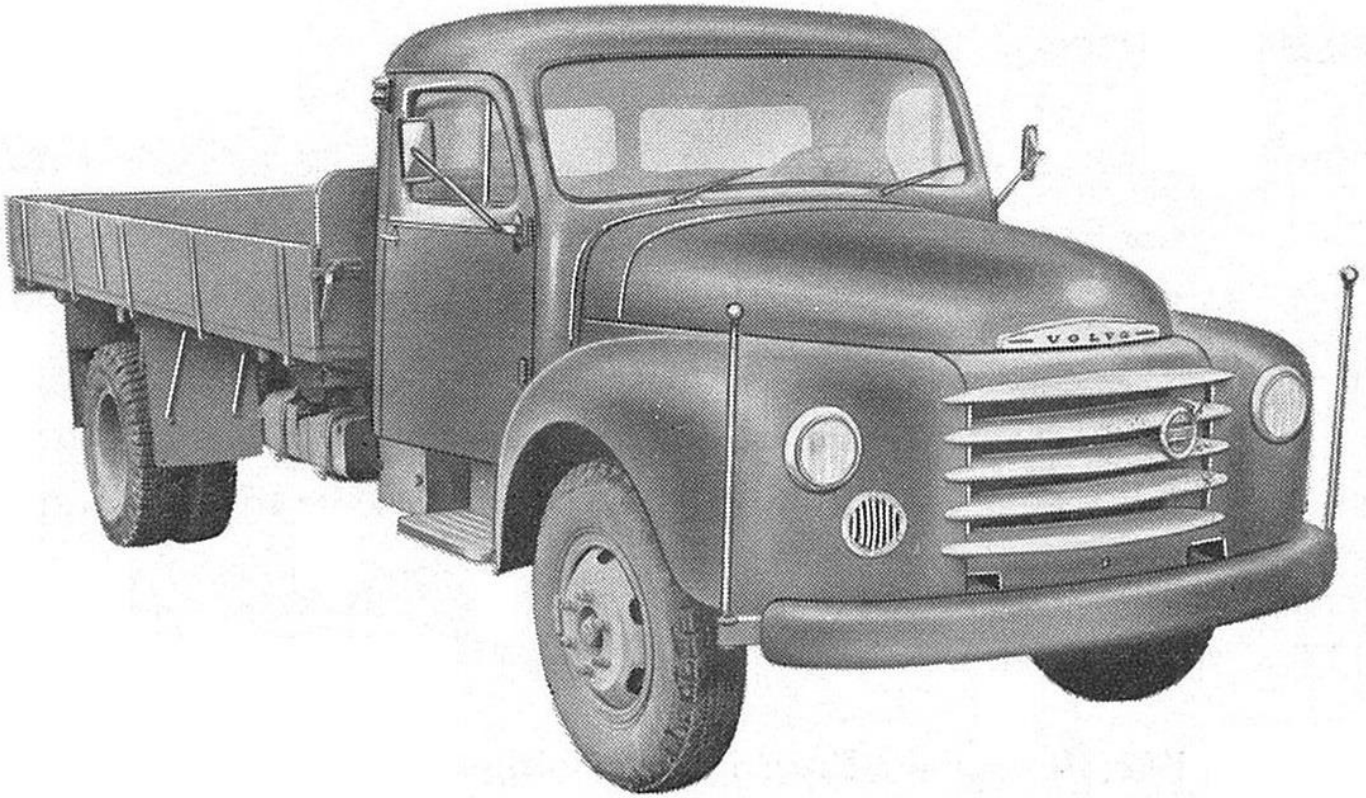


GECKO HEAVY INDUSTRIES

VOLVO L370 / N84 BRAGE



GE72023
SCALE: 1/72



History

The L370 Brage was a series of medium sized trucks produced by Volvo between 1954 and 1972. As part of the general Volvo product redesignation in 1965, the vehicle was renamed N84 which also gave the truck a slightly more powerful Diesel engine with 107 Bhp instead of the 115 Bhp gasoline engine. It was extensively used by the Swedish Armed Forces for light transportation on roads. At least one vehicle is preserved in the Swedish Army Museum. There are many in civilian hands.

Instructions

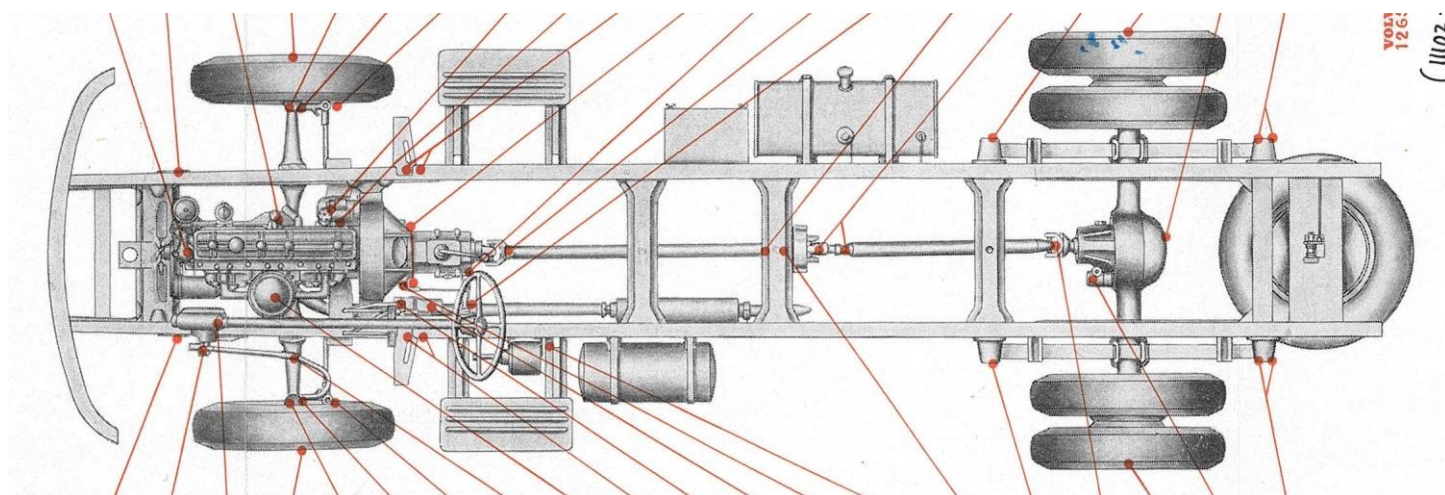
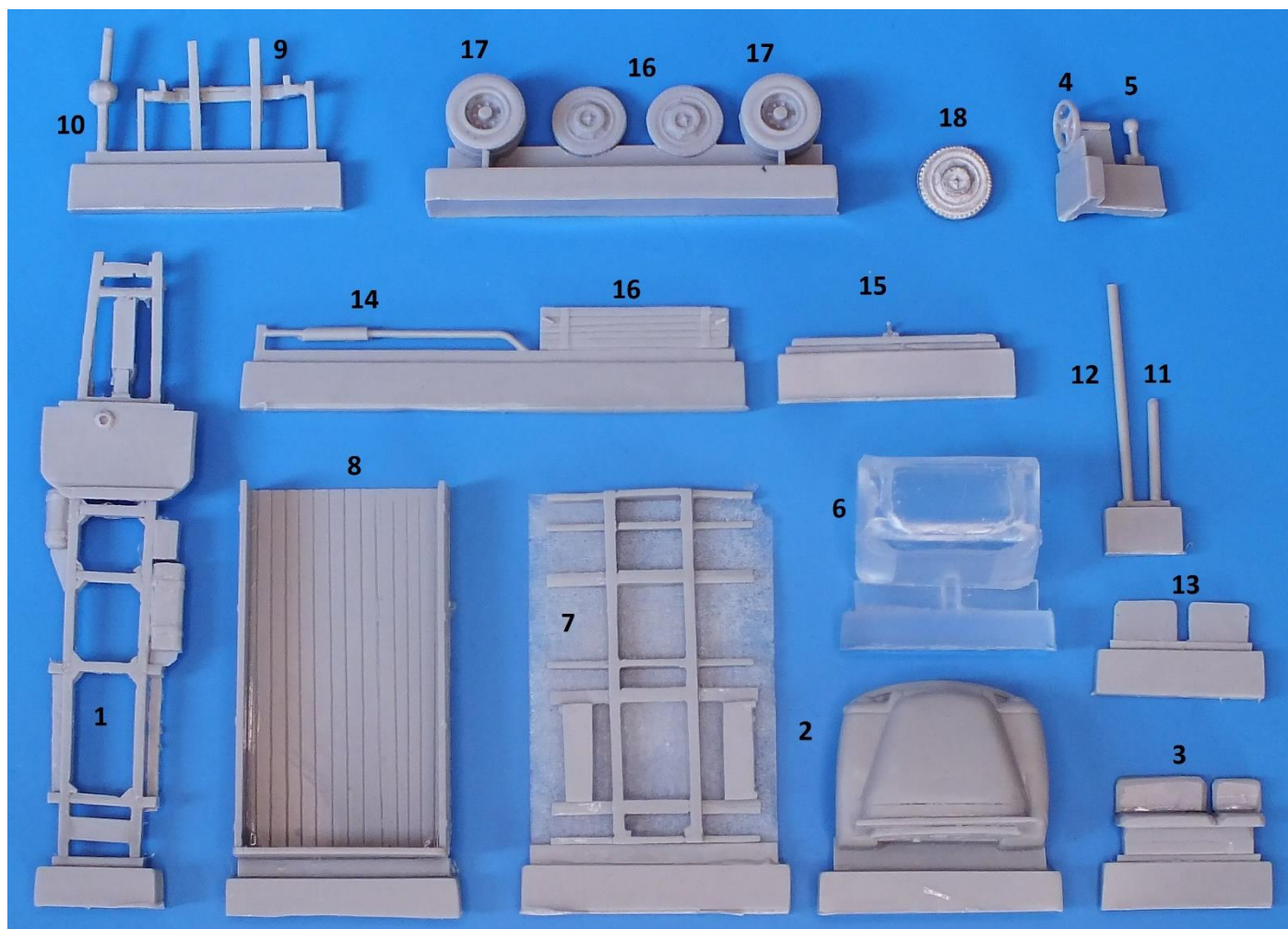
Remove all casting blocks and clean up the parts, including flash. Attach engine hood **(2)**, seat **(3)** steering wheel **(4)** and gear shift **(5)** to chassis frame **(1)**. Prime cabin interior and paint Swedish olive drab when dry. Seat was mat green canvas. Mask windows and paint interior and exterior of transparent cab **(6)**. When paint is dry, Remove interior masking and attach cab to platform on chassis. You may want to install a driver sourced from another source. Attach Large frame **(7)** about 2 mm behind cab with the stowage boxes facing forward. Cement cargo platform **(8)** onto frame, again leaving small gap to cab.

Attach front axle **(9)** and suspension unit to chassis on stubs provided. Attach small drive shaft **(11)** between transmission and transfer box. Attach rear axle **(10)** onto rear suspension with hole facing forward. Now attach long drive shaft **(12)** between transfer box and rear axle. Attach running boards **(13)** to frames provided under cab doors. Glue exhaust pipe **(14)** to inside left of chassis frame with end point downwards. Cement rear bumper **(15)** to rear of chassis frame. Attach tailgate **(16)** to cargo bed either open or closed. Now prime and paint all parts Swedish olive drab with gun metal highlights on grill and drive train components with plenty of rust on suspension and drive shafts. The wood of the cargo bed would have emerged where the paint would have rubbed off from usage.

Pre painted wheel **(16-17)** can now be installed permanently. The pre painted spare wheel **(18)** attaches under last frame of chassis but was not always used. Remove masking.

License plates were 5 digits with yellow numbers on black background and started with either 31, 34 or 39. They were attached in the area of the front grill and on the right side of the rear bumper under the light.

The kit can also be built as a civilian vehicle in the bright colours of the era.



Visit <https://www.facebook.com/groups/1599052557035228> IPMS UK Finnish Swedish SIG or use internet search engines for help with paint schemes and details. There is no guaranty these web sites are still up and running by the time you read this.

General instructions

We try to make our parts as easy to fit as possible but these are kits for relatively experienced modelers. First, we urge you to clean up the parts with soap and water, to remove possible remains of release agents. If parts are warped, dip in very hot water and gently bend back to rights shape. The usual plastic cement does not work on resins and metals. Cyano acrylate glue or epoxy does the job. Resin Parts are preferably sanded wet, to avoid inhaling the dust. The use of Cyano acrylate and epoxies is also to be done under well ventilated conditions. Read the instructions of your adhesive products.

NOT RECOMMENDED TO CHILDREN UNDER THE AGE OF 14.