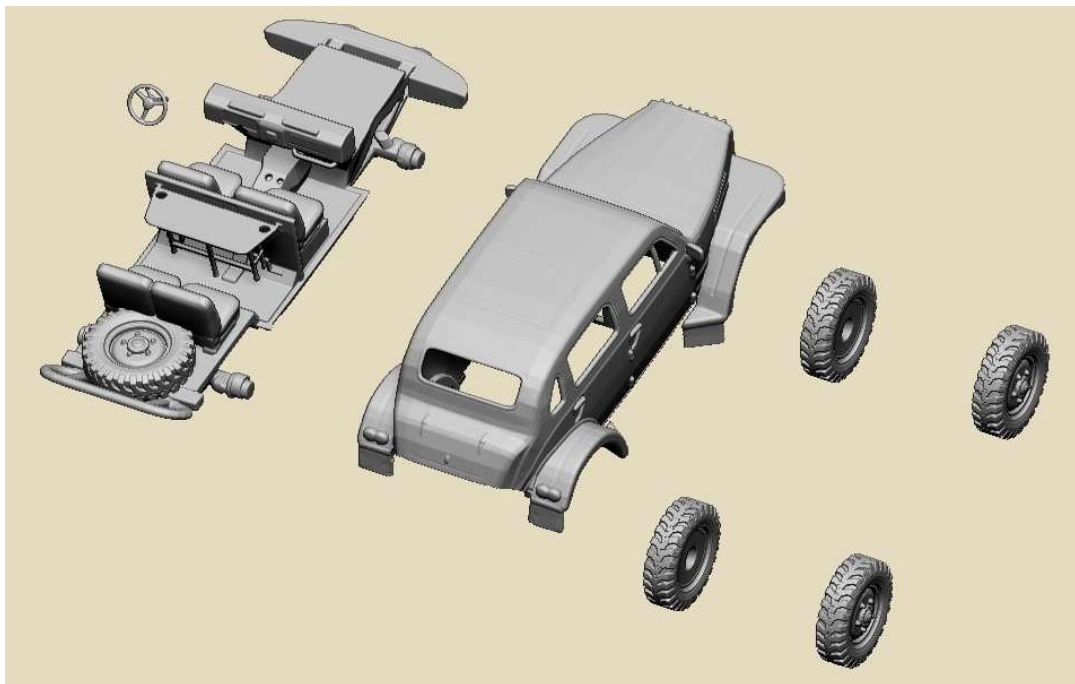


### History

The Volvo TP21 Raptgb 915 Sugga (sow) was built on the basis of a new post-war Volvo TL10/11 Tug light truck chassis and a prewar taxi body with enough space for command and control troops and their radio equipment. It continued to be used as a staff car until the 1970s. Due to its brutal good looks and status as one of the first true SUVs, It is now highly collectible as one of the most sought after Swedish oldtimers.

### Model Construction



Very carefully cut out the kit parts from the 3D supports and sand off any residue. Prime and paint all parts. You may want to attach antennas and roof racks. Most vehicles had a different configuration over time. For an early 1940s scheme, use the light green, beige, brown and black camouflage for hull and wheels. Some received a white winter camouflage. For the 1950s onward use Swedish olive drab. To liven up the model, we recommend the **GEC72056 1940s-1950s m39 Uniformed Driver and Passengers** or **GEC72039 1960-**

**1980s m/59 Uniformed Swedish Drivers and Passengers figures set**, depending of chosen scheme. On <https://www.geckoheavyindustriesmodels.de/gec-72049-volvo-tp-21-sugga/> Use password **GEC72049-Volvo-TP21-Sugga\*\*\*** to access reference material of period restored and museum photo, of Swedish Army and Air Force Volvo Suggas.

### General Instructions

We try to make our parts as easy to fit as possible but these are kits for relatively experienced modelers. First, we urge you to clean up the parts with soap and water, to remove possible remains of release agents. If parts are warped, dip in very hot water and gently bend back to right shape. The usual plastic cement does not work on resins and metals. Cyano acrylate glue or epoxy do the job. Resin Parts are preferably sanded wet, to avoid inhaling the dust. The use of Cyano acrylate and epoxies is also to be done under well ventilated conditions. Read the instructions of your adhesive products. **NOT RECOMMENDED TO CHILDREN UNDER THE AGE OF 14.**