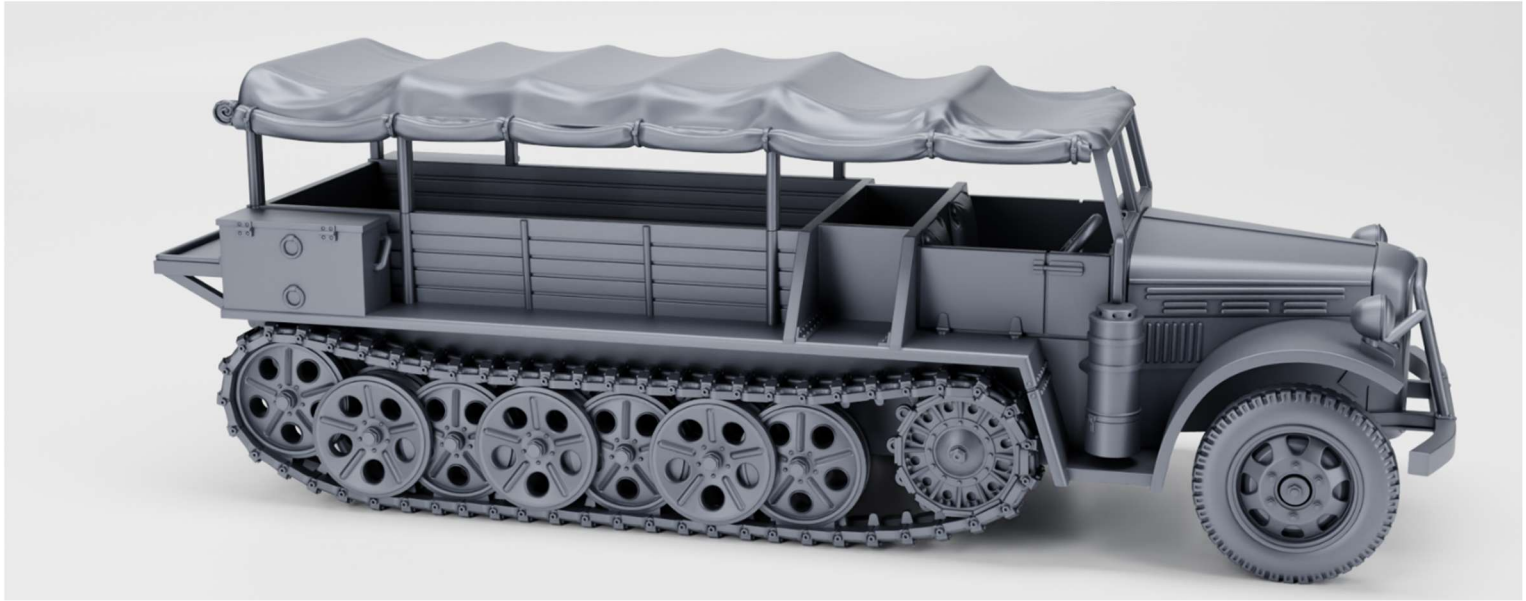


GECKO HEAVY INDUSTRIES

VOLVO HBT ARTILLERITRAKTOR M/43



GEC72050
SCALE: 1/72



History

In 1940 Germany could not deliver a second tranche of the Demag m/40 Artilleritraktor halftrack after the first 10. Volvo reverse engineered the Demag, but it weighed almost 1 ton more, had an extra set of road wheels, the Volvo engine was a less powerful, steering wheel was on the right and it measured 1 meter longer than the German vehicle. It could carry a payload of 2 tons and tow a 5-ton howitzers. Sufficient room was provided to transport the 8 armed gun crew (including commander) and a supply of ammunition under the bench seats and on the cargo floor, secured with straps or chains. From 1943, 99 vehicles were produced with a further 8 following later. After 1945, the half-tracks continued to be used for training purposes, alongside the Demag, throughout the 1950s and into the mid-1960s. The crew consisted of 8 persons, driver, commander and six soldiers. Enlisted men mostly used Mauser m/96 rifle while the officer had the Lahti m/40 Pistol. They wore the m/39 uniform with ammunition belt until 1960. After that some of the HBTs were sold off for forestry duties and other contract work and eventually ended up in museums or with collectors. About 50 of the m/43s were cut in half and converted to the wheeled tractor, Hjultraktor 383, in Army workshops.

Model Construction



Very carefully cut out the kit parts from the 3D supports and sand off any residue. Prime and paint all parts. For an early 1940s scheme, use the light green, beige, brown and black camouflage for hull and wheels. For the 1950s onward use Swedish olive drab. The tilt was dirty beige canvas Cement wheels and tracks to hull. To liven up your model, consider outfitting it with the **GEC72056 1940s-1950s m39 Uniformed Driver** and Passenger as well as **GEC72037 1940-1950s m/39 Uniformed Swedish Mechanized Infantry Squad** 3D Printed Figures. The German LeFH-18 105 mm Howitzers available from other model manufacturers, would be suitable to equip your halftrack as the Swedish Haubits m/39.

On <https://www.geckoheavyindustriestmodels.de/gec-72050-volvo-hbt-artilleritraktor-m-43/> use password the password found on the printed kit instructions to access reference material of period and museum photos of the m/43 halftrack to help paint your kit.

General Instructions

We try to make our parts as easy to fit as possible but these are kits for relatively experienced modelers. We urge you to clean up the parts with soap and water, to remove possible remains of release agents. If parts are warped, dip in very hot water and gently bend back to right shape. The usual plastic cement does not work on resins and metals. Cyano acrylate glue or epoxy do the job. Resin Parts are preferably sanded wet, to avoid inhaling the dust. The use of Cyano acrylate and epoxies is also to be done under well ventilated conditions. Read the instructions of your adhesive products. **NOT RECOMMENDED TO CHILDREN UNDER THE AGE OF 14.**